

2005-2008 Toyota Tacoma Access Cab rear install



Step 1. Driver and Passenger Bottoms/DB&PB:
Temporarily remove the plastic tray on the top of both seat bottoms using a Phillips screw driver. Lift up on the back edge of the plastic tray and pull it back to release the two plastic tongues sticking into the seat. All of the parts of the seat cover are labeled inside. Use the seat cover piece identification chart to ID parts. Place the seat cover on orienting the opening for the plastic tray on the seat cover and fold it forward. Mate the five long hook (sticky) Velcro™ to the carpet on the inside bottom of the seat as shown.



Step 2. Driver and Passenger Bottoms/DB&PB:
Pull the outside edge of the seat cover around the side of the seat and tuck it behind the plastic.



Step 3. Driver and Passenger Bottoms/DB&PB:
Pull the rear part of the seat cover back between the handle and mate the hook Velcro™ to the carpet on the seat.



Step 4. Driver and Passenger Bottoms/DB&PB:
Gently pull this outside edge hook Velcro™ between the handle and the plastic for the seat release and press it to the carpet on the bottom of the seat.



Step 5. Driver and Passenger Bottoms/DB&PB:
Mate the two outside edge Velcro™ to the carpet under the seat.



Step 6. Driver and Passenger Bottoms/DB&PB:
Lay the bottom piece of the cover onto the seat and mate the hook Velcro™ to the carpet on the seat. Some repositioning of the Velcro™ may be needed for the best fit.



Step 7. Driver and Passenger Bottoms/DB&PB:
Slide the plastic tongues into the front of the opening and push the tray down into position, and then reinstall the screw.

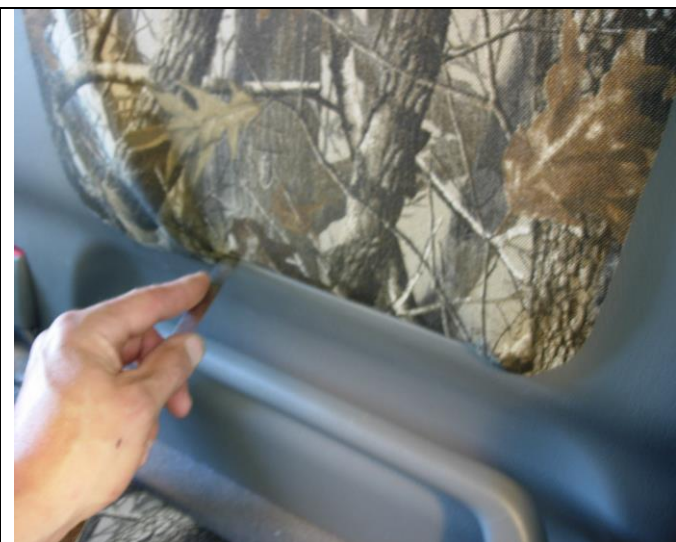


Step 8. Driver Top/DT:
Carefully tuck the top of the cover in using a thin feeler gauge, or any rounded thin tool, or even a plastic butter knife. Make sure it's centered so there is at least an inch of fabric on the sides and bottom to tuck. Be careful poking the feeler gauge into the plastic to avoid damaging it.



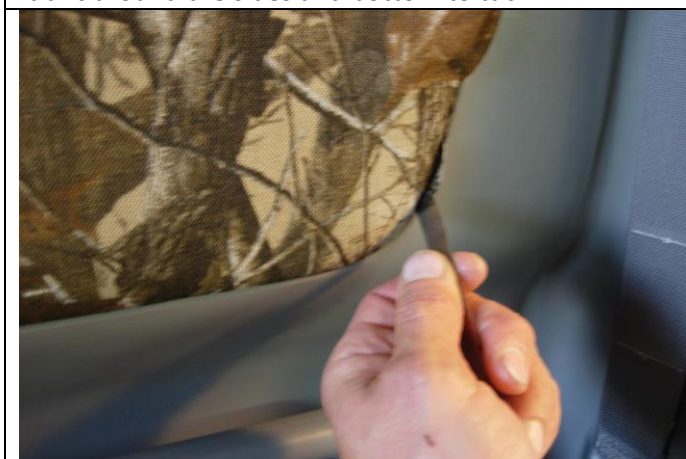
Step 9. Passenger Top/PT:

Remove the plastic cover for the child restraint. Tuck the top of the cover as in step 8. Make sure it's centered on the cutout and there is at least an inch of fabric around the sides and bottom to tuck.



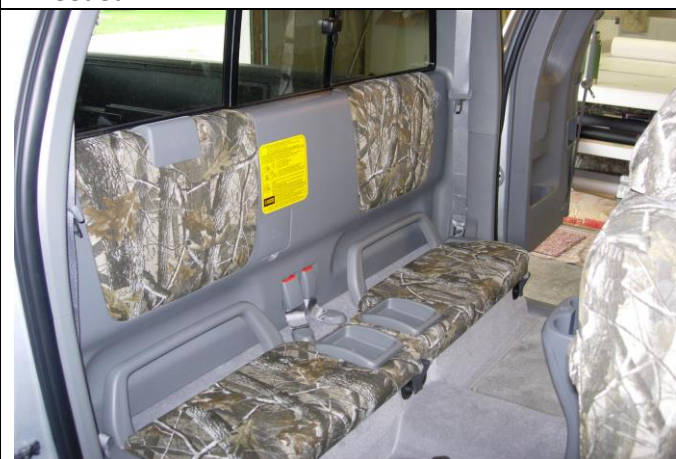
Step 10. Driver and Passenger Top/DT&PT:

Carefully tuck the cover between the plastic starting at the middle of the bottom and work your way to the left and right. This will be difficult, so take plenty of breaks if needed.



Step 11. Driver and Passenger Top/DT&PT:

Carefully push the material of the cover straight into the corner and work your way up to the top. Make sure there is fabric between the feeler gauge and the plastic on the initial tuck. It takes a few pokes to get the fabric all the way in.



Congratulations enjoy your seat covers!

It takes a little more effort to put on my custom fit seat covers, but its well worth it. They will give you several years of use, no matter the abuse.