

2024 Tacoma Bucket Installation



Step 1. Seat Preparation

All the parts of the seat cover are labeled on the inside right. Use the Seat Cover Part ID Chart" to identify parts. Recline the seat, depress the push button release while holding gentle upward pressure and temporarily remove the headrest.

Electric controlled seats: lift seat up as far as it goes and move the seat forward.



Step 2. Seat Preparation

View from behind the seat. **USE EXTREME CAUTION** reaching under the seat. Nearly every piece of metal is under the seat is razor sharp, and anything that moves has grease. Locate the two elastic straps. Follow them under the seat where they're connected to a plastic hook. Push the elastic forward to unhook them, remembering the clip locations.



Step 3. Headrest/H:

Slide the headrest cover on with the extending hook Velcro™ to the front. Form the cover to the top and sides of the headrest by lining up the seams of the seat cover to the seams on the headrest, they should match closely.



Step 4. Headrest/H:

Lastly, tuck the hook Velcro™ under the back edge and press it to the loop Velcro™ sewn inside. Install the headrests back onto the seat when you've completed the installation.



Step 5. Lid/L

Carefully disconnect the Velcro™ and splay it out as shown, placing the cover on with the cut-out for the latch in front.



Step 6. Lid/L

With the cover in place on the front, slide the back edge down, pulling on the sides of the cover as shown.



Step 7. Lid/L

Lift the Lid up and route the Velcro™ thru the hinge in back. Grab onto the ends of the Velcro™ and pull tight, then press them together.



Step 8. Lid/L

Lastly, connect the side-to-side Velcro™ the same way. Tighten the Velcro™ by pulling it forward like a bow string, then reconnect taking up the slack.



Step 9. Driver & Passenger Bottoms/DB&PB:

Seats with electric controls, lift seat up as far as it goes and move both seats forward. Disconnect all Velcro™ from the back edge. Take the plastic buckles with hook Velcro™ sewn to them and put them behind the seat for later in the installation.



Step 10. Driver & Passenger Bottoms/DB&PB:

View from the passenger side. The Driver and Passenger covers are different, meaning one side won't fit the other. Each cover is marked on the inside back right. DB-Driver Bottom, PB-Passenger Bottom. Place the cover on as shown.



Step 11. Driver & Passenger Bottoms/DB&PB:

View of the front of the seat bottom. Turn the seat cover inside out as shown to prevent the hook Velcro™ from catching prematurely.



Step 12. Driver & Passenger Bottoms/DB&PB:

Tuck the outside edge behind the plastic cowlings and pull the seat cover back, forming the seat cover to the front of the seat. Carefully tuck the back edge of the cover in. Same as Step 3, line up the seams of the seat cover to the seams on the seat on left and right.



Step 13. Driver & Passenger Bottoms/DB&PB:
View from the passenger side. Fold the 1" hook Velcro™ in half lengthwise pressing the sticky sides together making it a ½" wide and stiff as a ruler. Slide it straight down as shown until it comes out the bottom.



Step 14. Driver & Passenger Bottoms/DB&PB:
Pull the Velcro™ thru the bottom of the plastic cowl as shown. Pull back (left) gently on the Velcro™ while tucking the cover behind the plastic cowl and smoothing the side of the seat cover from front to back. Lastly, carefully slide the Velcro™ under the seat through the gap between the seat and frame.



Step 15. Driver & Passenger Bottoms/DB&PB:
Locate the inside hook Velcro™ next to the console.



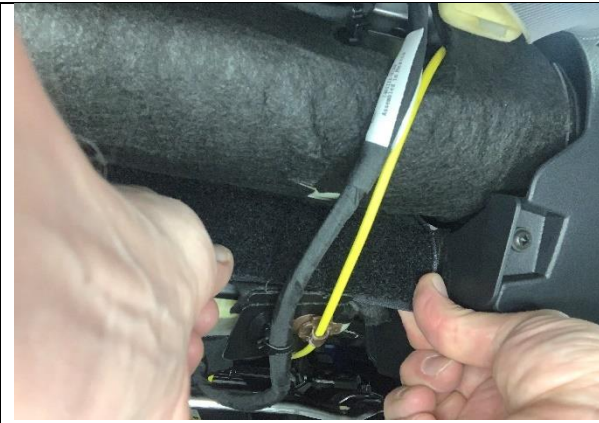
Step 16. Driver & Passenger Bottoms/DB&PB:
Push it straight down in front of the seatbelt and under the seat.



Step 17. Driver & Passenger Bottoms/DB&PB:
Again, form the front of the seat cover to the seat, making sure it lined up on left and right and is fitting snug to the front of the seat.



Step 18. Driver & Passenger Bottoms/DB&PB:
Press the hook Velcro™ sewn inside the seat cover to the fuzzy carpet under the front of the seat.



Step 19. Driver & Passenger Bottoms/DB&PB:

View from behind the passenger seat. Pull the back of the seat cover forcibly taking up the slack of the cover. Line up the cover with the outside edge of the plastic as shown.



Step 20. Driver & Passenger Bottoms/DB&PB:

Use a light to see under the seat if you have dark conditions. Reach under the seat and carefully route the outside edge hook Velcro™ at 45-degree angle to the back.



Step 21. Driver & Passenger Bottoms/DB&PB:

Pull on the back of the cover holding it tight to the seat then press the hook Velcro™ to the loop Velcro™.



Step 22. Driver & Passenger Bottoms/DB&PB:

Route and connect the inside edge next to the console Velcro™ same as Step 21.



Step 23. Driver & Passenger Bottoms/DB&PB:

Time to connect the buckles with hook Velcro™. View from under the back edge of the passenger seat. Connect the buckles to the metal bar shown. See Step 24 for an expanded view.

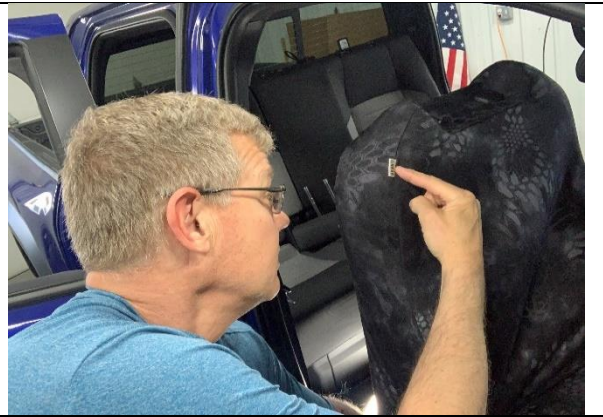


Step 24. Driver & Passenger Bottoms/DB&PB:

Same as Step 21&22, pull the cover back and hold it to the seat, then press the Velcro™ together.



Step 25. Driver & Passenger Bottoms/DB&PB:
 Connect the other buckle to the metal bar where shown, avoiding the square plastic apparatus and angle it to the center and press it to the loop Velcro™. The buckles are critical to anchor the seat cover in place.



Step 26. Driver & Passenger Top/DT&PT:
 Tip the backrest forward to an upright position. The seat covers have provisions for the Side Impact Airbags. It is critical to get the covers on the correct seat. Each cover is marked on the inside right. DT-Driver Top, PT-Passenger Top, noting that the airbag tag is on the outside where indicated.



Step 27. Driver & Passenger Top/DT&PT:
 Tuck the seat cover under the plastic for the headrests starting with the push button side. Form the top of the seat cover to the top of the seat, lining up the seams of the seat cover to the seams on your seat same as previous steps.



Step 28. Driver & Passenger Top/DT&PT:
 Disconnect the plastic buckles from the Velcro™ and put them behind the seat. Carefully tuck in the front of the seat covers, again lining up the seams on left and right. Velcro™.



Step 29. Driver & Passenger Top/DT&PT:
 Locate the two Velcro™ sewn to the front edge. Grab the cover and pull it through forcibly taking up slack in the front. From the front side of the seat, use your hand in a smoothing action from top to bottom taking up and press the cover to the backrest. Go behind the seat and pull on the cover, taking up more slack.



Step 30. Driver & Passenger Top/DT&PT:
 Time to connect the remaining two plastic buckles under the seat. They'll connect to a metal bar on the far left and far right similar to Step 23.



Step 31. Driver & Passenger Top/DT&PT:
View from behind and under the right side of the passenger seat. Connect the plastic hook to the metal.



Step 32. Driver & Passenger Top/DT&PT:
Route the Velcro™ through the buckle so it can connect to itself, avoiding pinching any wires.



Step 33. Driver & Passenger Top/DT&PT:
Lastly, pull the cover down forcibly and connect the Velcro™ on both sides. Then again from the front side of the seat, use your hand in a smoothing action from top to bottom taking up and press the cover to the backrest. Go behind the seat and re-connect the Velcro™ to take up even more slack. Recline the seat to its normal position while smoothing the seat cover down the front. You'll notice the front side of the seat cover tightens as you recline the seat. The seat cover will form to the backrest through time and usage.



Step 34. Driver & Passenger Top/DT&PT:
Lastly re-connect the two elastic straps under the seat to the plastic hooks from Step 2. Lastly, pull the cover down and press the hook Velcro™ to the fuzzy carpet on the backside of the seat.