

2019-2024 Ram Bucket Dip Top Installation



Step 1. Headrests/H:

The installation can be viewed on our YouTube channel:
<https://youtu.be/n7MjZeor30s>

All the parts of your seat cover are labeled on the inside right of each part. Use the seat cover Part ID chart for identification.

Carefully open the Velcro™ and slide the headrest cover on with the extending hook Velcro™ to the front in a side to side sawing motion as shown.



Step 2. Headrests/H:

Recline the seats so the headrest will clear the roof while removing it.

Release the headrests by gently lifting them up all the way. Then, depress the two buttons at the same time while holding gentle upward pressure, lifting evenly until it comes out.



Step 3. Headrests/H: (Steps 3 & 4 Only Apply to the large variant of the "Thick Headrest")

Carefully open the Velcro on bottom and side of the cover. Slide the cover on with the extending hook Velcro to the front.



Step 4. Headrests/H:

Connect the side Velcro™ as shown.



Step 5. Headrests/H:
Line up the seams of the headrest cover to the seams of the headrest on left and right, they should match closely.
Lastly, connect the Velcro™ on the back edge as shown.



Step 6. Seat Preparation
View from behind the seat. Slide the seats all the way forward. For electric controlled seats, lift seats up all the way up. Prepare the seat for installation by releasing the elastic shown in hand. There are two on each seat, note the location and avoid covering with Velcro™ installing the seat bottoms.



Step 7. Seat Preparation
Follow the elastic under the seat to where it's connected, and push it forward to release it.



Step 8. Seat Preparation
Next, locate the metal bar at the back edge of the seat. This bar is super sharp on top and bottom and capable cutting your seat cover.



Step 9. Seat Preparation:
Cover the top and bottom edge with electrical tape, or use 2" wide tape and do in one shot.



Step 10. Seat Preparation
Carefully press the tape to the metal bar.



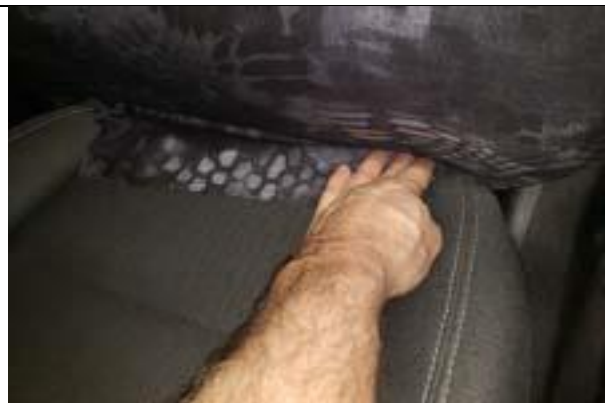
Step 11. Driver & Passenger Top/DT&PT:
Provisions are made for the side impact airbags. It is critical to get the covers on the correct side.
The covers are marked on the inside front right "DT & PT" for Driver & Passenger Top. Also note, the Driver Top has our Headwaters Seat Cover label on the backside.
Slide the DT & PT on, tucking the fabric under the plastic for the headrests, starting on the push button side as shown.



Step 12. Driver & Passenger Top/DT&PT:
Form the top of the seat cover to the top of the seat. Next, line up the seams of the seat cover to the seams of the seat on left and right, they should match closely.



Step 13. Driver & Passenger Top/DT&PT:
Tuck in the outsides of the seat cover behind the plastic molding as shown



Step 14. Driver & Passenger Top/DT&PT:
Next, pull down and carefully tuck the cover under the taped metal bar shown in Step 15.
Next, line up the seams of the seat cover to the seams of the seat on left and right, they should match closely.



Step 15. Driver & Passenger Top/DT&PT:
Pull the material tight with both hands. Then use one hand in a smoothing action down the front of the seat cover from top to bottom, while pulling on the cover from behind the seat with the other hand to gain slack on the front side.



Step 16. Driver & Passenger Top/DT&PT:
Next, wrap the material around the metal bar.



Step 17. Driver & Passenger Top/DT&PT:
Start on one side. Hold the material tight with one hand.



Step 18. Driver & Passenger Top/DT&PT:
Press the provided "pinch welt" over the material onto the metal bar.



Step 19. Driver & Passenger Top/DT&PT:
Pull the other side tight and connect same as Step 16. Look at the front side and see if the cover is fitting snug. If not, repeat Step 15 to snug the cover.



Step 20. Driver & Passenger Bottom/DB&PB:
View of driver seat next to the console.
Remove the seat belt from the elastic as shown.



Step 21. Driver & Passenger Bottom/DB&PB:
Place the cover on with the long hook Velcro™ to the front as shown. Use caution working under the seat. All the metal is razor sharp, and anything that moves has grease. Look at your hands before touching the seat cover after working under the seat to avoid getting grease on to your seat cover. Keep a paper towel or rag handy.



Step 22. Driver & Passenger Bottom/DB&PB:
Tuck the back edge in carefully under the metal bar. From behind, pull the cover back and tight to the front of the seat as shown on Step 23.



Step 23. Driver & Passenger Bottom/DB&PB:
Same as Step 12, line up the seams of the seat cover to the seams of the seat along the sides and front. Work the material inside the cover outward, or from forefinger to thumb.



Step 24. Driver & Passenger Bottom/DB&PB:
Again, for electric controlled seats, lift the seat/seats all the way up. This clears a path to route the Velcro™. Fold the side Velcro™ in half lengthwise as shown, with the sticky facing in. This will make it stiff and easier to route.



Step 25. Driver & Passenger Bottom/DB&PB:
Slide the side Velcro™ straight down from where it's sewn on.



Step 26. Driver & Passenger Bottom/DB&PB:
Use a light when working under the seat. Locate the side Velcro™, and route it thru the gap in the frame to the back corner, avoid wires. Similar to Step 15, slide your hand down the outside edge of the cover while gently pulling on the Velcro™, then press it to the loop Velcro™ sewn on the back edge as shown. Be careful to not over tighten and create wrinkles.



Step 27. Driver & Passenger Bottom/DB&PB:
Same as Step 24, fold the long front of the seat hook Velcro™ in half lengthwise with the sticky facing in.



Step 28. Driver & Passenger Bottom/DB&PB:
Route the outside front Velcro™ where shown to the back, avoiding any mechanisms or wiring. Temporarily connect it to the loop Velcro™ sewn on the back edge.



Step 29. Driver & Passenger Bottom/DB&PB:
Same as Step 28, route the front Velcro™ where shown, avoiding the mechanisms and wiring.



Step 30. Driver & Passenger Bottom/DB&PB:
Connect the two plastic buckles under the backside of the seat to the frame. Position them left and right, centered with about 6-8" between them.



Step 31. Driver & Passenger Bottom/DB&PB:
Similar to Step 15, use one hand in a smoothing action from front to back on the seat bottom while pulling on the back of the cover with the other hand. This will gain slack and tighten the cover to the front of the seat. Lastly, press the hook Velcro™ to the loop Velcro™ sewn on the back edge. Trim the excess length of Velcro™.



Step 32. Console Lid/L:
Carefully open the Velcro™, and place the cover on with the cut-out in front, and the letter "L" in back. Next, use one hand to hold the cover in place, then open the console. Route the bottom or back Velcro™ through the hinge and connect it to the front Velcro™ holding the ends as shown. Once connected, center the cover, pull the Velcro™ forward, and re-tighten them.



Step 33. Console Lid/L:
Lastly, fold the side Velcro™ under the lid to see where they'll lay. Prepare the areas with rubbing alcohol by scrubbing hard, then wiping them dry while wet. If the adhesive Velcro™ are not sticking, re-clean the areas with warm to hot soapy water and rag. Then re-clean areas with rubbing alcohol.

Call 877-485-3001 with any questions.