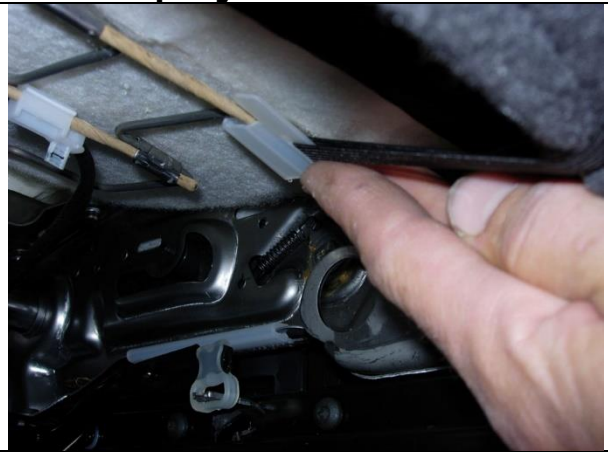


2013-22 Dodge Reg Cab 40-20-40 opening upper console w/non-opening middle bottom Installation



Step 1.

Prepare the driver and passenger seat for installation by temporarily removing the headrests. Recline the backrests and depress the two push button releases shown while holding gentle upward pressure.



Step 2.

(View from under the back of the seat bottom.) Temporarily unhook both plastic pieces sewn to the elastic straps by pushing them forward. Use caution reaching under the seat and avoid sharp metal edges.



Step 3.

Remove the seat belt from the elastic on the inside edge of the driver and passenger seat bottoms.



Step 4. Driver & Passenger Bottoms/DB&PB:

All the parts of the seat cover are labeled inside. Use the Seat Cover Piece Identification Chart to ID parts. Tuck the back edge of the seat cover into the seat. Next, route the long hook (sticky) Velcro under the front of the seat where shown, avoiding any seat mechanisms.



Step 5. Driver & Passenger Bottoms/DB&PB:

Slide the long outside edge hook Velcro™ in as shown between the plastic and the seat, then put the seat belts through the elastic on the inside of the seat cover.



Step 6. Driver & Passenger Bottoms/DB&PB:

Line up the seams of the seat cover to the seams of the seat, they should match closely. Then, tuck the outside edge in as shown.



Step 7. Driver & Passenger Bottoms/DB&PB:

If you have electric seats be sure to lift the seat up as high as it will go. This will pull everything away from your seat and free up some space. Route the long front edge hook Velcro™ to the loop Velcro™ sewn on the back edge. Make sure the Velcro is routed above any wires or bars. Route the outside edge hook Velcro™ (left) at an angle and connect it to the loop Velcro™ sewn on the back edge. Use one hand in a smoothing action from front to back along the outside edge and top of the seat cover while pulling on the back of the seat cover, then tightening the Velcro™. Note the two center Velcro™, they're from Step 9.



Step 8. Driver & Passenger Bottoms/DB&PB:

View from the inside edge of the passenger bottom. Press the two hook Velcro™ sewn inside the seat cover to the carpet on the seat. Like step 7, slide one hand from front to back along the inside edge while connecting the Velcro™ to the carpet to remove any slack in the seat cover.



Step 9. Driver & Passenger Bottoms/DB&PB:

Connect the plastic hooks under the back edge of the seat to the metal bar, and then press the hook Velcro™ to the loop Velcro™ sewn on the back edge. This will keep the seat cover from shifting around.



Step 10. Driver & Passenger Top/DT&PT:

Slide the seat covers on with the extending hook Velcro™ to the front. Tuck the fabric under the plastic on the outside edge of the seat. Like Step 6, line up the seams of the seat cover to the seams of the seat.



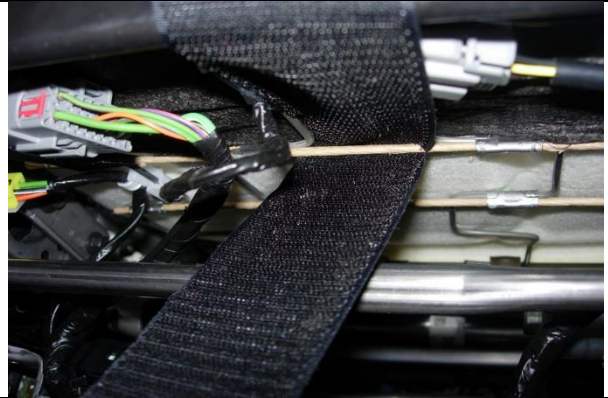
Step 11. Driver & Passenger Top/DT&PT:
Tuck the fabric under the plastic of the headrests starting with the push button side as shown.



Step 12. Driver & Passenger Top/DT&PT:
Tuck the hook Velcro™ into the seat, slide the seat forward and tip the backrests forward.



Step 13. Driver & Passenger Top/DT&PT:
View from under the back of the driver seat bottom, outside edge. Route the hook Velcro™ over the metal bar that is between the back edge and the electrical plug. The same metal bar exists under the seat on the other side. Note: the Velcro™ will get crinkled when it's run over the bar and tightened. Put the backrest in the straight up position.



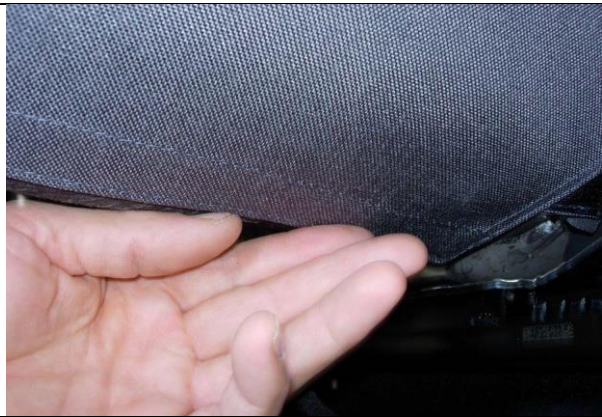
Step 14. Driver & Passenger Top/DT&PT:
View from under the back of the seats. Feed the center Velcro™ over the metal rod that the plastic clips hook up to. This Velcro™ will be flat when routed over the bar. From behind the seat, pull the material of the seat cover down towards the floor to tighten the front side, holding the top cover tight to the bottom cover, then take up the slack in the Velcro™ and press it to the 2" X 3" loop Velcro™ sewn inside the seat cover.



Step 15. Driver & Passenger Top/DT&PT:
Re-connect the plastic clips under the seat. Route the 1"x12" loop Velcro™ over the same metal bar used in Step 13 and pull both ends out to the back.



Step 16. Driver & Passenger Top/DT&PT:
Press the loop Velcro™ to the backrest.



Step 17. Driver & Passenger Top/DT&PT:

While holding the loop Velcro™ tight to the seat, pull down and press the back edge hook Velcro™ of the seat cover to the loop Velcro™ as shown.



Step 18. Middle Bottom/MB:

Temporarily remove the seatbelts from the elastic. Line up the seams of the seat cover to the seams of the seat, and then pull back and press the hook Velcro™ on left and right to the carpet on the back edge of the seat.



Step 18. Middle Bottom/MB:

Route the side hook Velcro™ in front of the metal brace and to the back side of the middle bottom.



Step 18. Middle Bottom/MB:

Press the back edge of the seat cover onto the side hook Velcro™ as shown. Lastly, push the seat belts through the provided elastic loops on the seat cover.



Step 20. Console/C:

Slide the cover on as shown, line up the seams.



Step 21. Console/C:

Tuck the left & right front in around the hinge area.



Step 22. Console/C:
Pull the right side up and press the Velcro™ to the carpet.



Step 22. Console/C:
Pull the back left & right sides up and press the Velcro™ to the carpet as shown.



Step 23. Console/C:
Slide the rear Velcro™ into the hinge area using a sawing motion while moving the lid. Fold the Velcro™ into the cavity and look where they will lay inside. Clean the areas with rubbing alcohol by scrubbing hard and wiping it dry while it's still wet. Pull the Velcro™ tight, peel off the backing and press the adhesive Velcro™ onto the plastic.



Step 24. Headrests/H:
Slide the cover on with the headrest still on the seat with the extending Velcro™ to the front as shown.



Step 25. Headrests/H:

Tuck the front Velcro™ under the back edge and connect it to the loop Velcro™ sewn inside the back edge.



Step 26. Lid/L:

Carefully open the Velcro™ and fold the console down, place the cover on and open the lid. Line up the seams and connect the Velcro™ under the lid as shown.