

2005-09 Dodge 40-20-40 Plastic sides w/non-opening middle bottom Installation



Step 1. Driver & Passenger Bottoms/DB&PB:

All of the parts of your seat cover are labeled on the inside. Use the "Seat Cover Piece Identification Chart" to identify the pieces. Place the seat cover on with the long hook (sticky) Velcro™ to the front. Line up the seams of the seat cover to the seams of the seat, they should closely match. Route the hook Velcro™ under the front of the seat, avoiding any seat mechanisms, and press them to the carpet on the back edge as shown.



Step 2. Driver & Passenger Bottoms/DB&PB:

Slide the outside edge hook Velcro™ down between the plastic cowling and the seat. Look under the front of seat to locate it, and then route it at an angle, avoiding mechanisms, and press it to the carpet on the back edge. The inside edge hook Velcro™ connects similarly at an angle to the carpet on the back edge of the seat bottom.



Step 3. Driver & Passenger Bottoms/DB&PB:

Tilt the back rest forward and tuck the back edge of the seat cover into the seat.



Step 4. Driver & Passenger Bottoms/DB&PB:

From the back of the seat, pull back on the cover and press the hook Velcro™ to the carpet as shown.



Step 5. Driver & Passenger Tops/DT&PT:

Temporarily remove the headrests by depressing the push button release and gently lifting up. Slide the seat cover on with the extending hook Velcro™ to the front. Tuck the seat cover under the plastic for the headrest starting with the push button release.



Step 6. Driver & Passenger Tops/DT&PT:

Tuck the Velcro™ into the seat. Line up the seams of the seat cover to the seams of your seat, they should closely match. Gently pull on the hook Velcro™ with one hand from the back while sliding your other hand down the front of the seat cover in a smoothing action, pin the Velcro™ to the seat with the front hand, then press the Velcro™ together with the other hand in back.



Step 7. Console/C:

With the console in the up position, slide the console cover on and tuck it in on the bottom. Fold the console down, holding it in position with one hand. Note where the Velcro™ will lay inside the cavity. Pull the cover around the hinges on right and left. Press the hook Velcro™ to the carpet on the console just behind the right and left hinge. The material should come up flush to the opening.



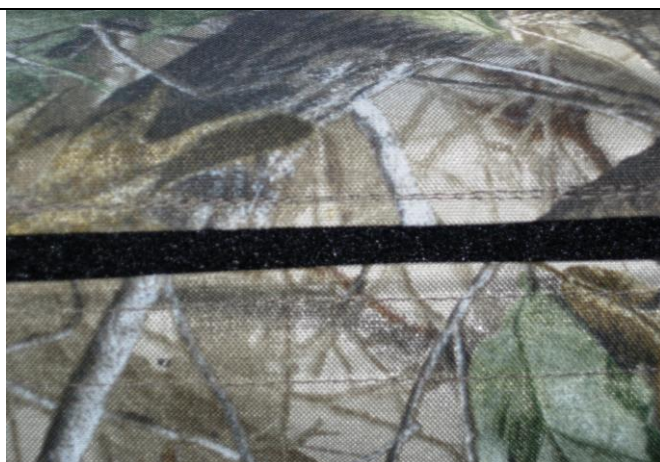
Step 8. Console/C:

Clean the surface with rubbing alcohol by scrubbing the plastic hard with an alcohol soaked cloth, wiping it dry while it's still wet. Peel off the backing and stick the adhesive Velcro™ to the plastic on the inside of the box. If they are not sticking, stop and re-clean the areas. The adhesive hook works best at 68 degrees or warmer for at least 24 hrs if possible.



Step 9. Lid/L:

Connect the Velcro™ under the console lid starting with the top or front. The photo doesn't show an improvement to the top to bottom Velcro™. Slide the bottom, or rear Velcro™ into the left and right side of the hinge, connecting them to the corresponding Velcro™ in front.



Step 10. Lid/L:

View from behind the console and lid. Open the lid and tuck the loop Velcro™ sewn on the back of the lid, under the back edge of the console cover, thus connecting the Velcro™. Note there will be a ½-1" gap in the fabrics with a little loop Velcro™ showing.



Step 11. Middle Bottom/MB:

Temporarily remove the seatbelt from its elastic restraint.



Step 12. Middle Bottom/MB:

Pull the left and right sides of the seat cover around to the back and press them to the carpet on the seat. Route the long hook Velcro™ under the front of the seat and press them to the carpet. Route the long side hook Velcro™ under the seat and connect them at an angle forming an "X" in the middle as shown.



Step 13. Middle Bottom/MB:

Pull the cover back and press it to the carpet as shown. Put the seatbelts through the elastic sewn to the seat cover.



Step 14. Headrests/H:

Slide the cover on with the extending hook Velcro™ to the front, connecting them to the loop Velcro™ as shown.