

2005-09 Dodge 40-20-40 Plastic Sided Seat Installation



Step 1. Driver & Passenger Bottoms/DB&PB:
All of the parts of your seat cover are labeled on the inside. Use the "Seat Cover Piece Identification Chart" to identify the pieces. Place the seat cover on with the long hook (sticky) fasteners to the front. Line up the seams of the seat cover to the seams of the seat, they should closely match. Route the hook fasteners under the front of the seat, avoiding any seat mechanisms, and mate them to the carpet on the back edge as shown.



Step 2. Driver & Passenger Bottoms/DB&PB:
Slide the outside edge hook fastener down between the plastic cowl and the seat. Look under the front of seat to locate it, and then route it at an angle, avoiding mechanisms, and mate it to the carpet on the back edge. The inside edge hook fastener mates similarly at an angle.



Step 3. Driver & Passenger Bottoms/DB&PB:
Tuck in the back edge of the seat cover and tilt the back rest forward.



Step 4. Driver & Passenger Bottoms/DB&PB:
From the back of the seat, pull back on the cover and mate the hook fastener to the carpet as shown.



Step 5. Driver & Passenger Tops/DT&PT:

Temporarily remove the headrests by depressing the push button release and gently lifting up. Slide the seat cover on with the extending hook straps to the front. Tuck the seat cover under the plastic for the headrest starting with the push button release.



Step 6. Driver & Passenger Tops/DT&PT:

Tuck the hook straps into the seat. Line up the seams of the seat cover to the seams of your seat, they should closely match. Gently pull on the hook strap with one hand from the back while sliding your other hand down the front of the seat cover in a smoothing action. Lastly, tuck the fasteners under the back edge and mate the hook fastener to the loop fastener sewn inside.



Step 7. Console/C:

With the console in the up position, slide the console cover on and tuck it in on the bottom. Fold the console down, holding it in position with one hand. Note where the fasteners will lay inside the cavity. Fasten the right side and left side rear hook tabs to the carpet behind the console hinge.



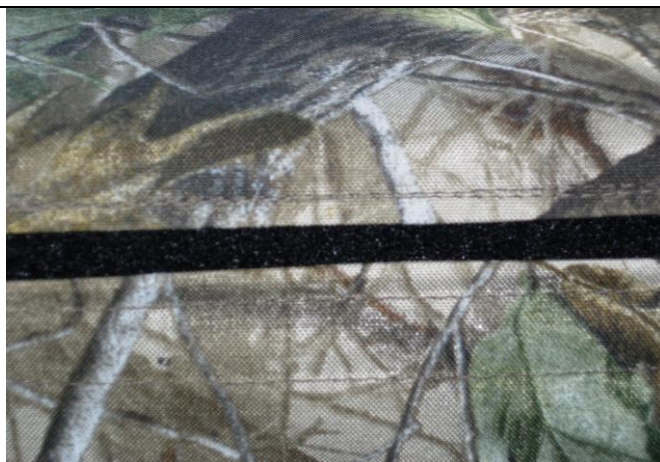
Step 8. Console/C:

Clean the surface with rubbing alcohol by scrubbing the plastic hard with an alcohol soaked cloth, wiping it dry while it's still wet. Peel off the backing and stick the adhesive fasteners to the plastic on the inside of the box, not on the top. If they are not sticking, stop and re-clean the areas. The adhesive hook works best at 68 degrees or warmer for at least 24 hrs if possible.



Step 9. Lid/L:

Mate the fasteners under the console lid starting with the top or front. The photo doesn't show an improvement to the top to bottom fasteners. Slide the bottom, or rear fasteners into the left and right side of the hinge, mating them to the corresponding fasteners in front.



Step 10. Lid/L:

View from behind the console and lid. Mate the extending loop fastener on the lid to the console cover in back by the hinge. Note there will be a 1/2-1" gap in the fabrics with a little loop fastener showing.



Step 11. Middle Bottom Back/MBB:

Lift the middle bottom up and place the loop fasteners into the plastic cavity of the middle bottom. Prepare the surface of the plastic the same as step 8. Fasten the adhesive hook to the inside of the plastic box.



Step 12. Middle Bottom Back/MBB:

Mate the hook fastener to the carpet on the back edge of the middle seat bottom.



Step 13. Middle Bottom/MB:

Mate the fasteners to the carpet on the bottom of the seat and the long side to side fasteners to each other.



Step 14. Headrests/H:

Slide the cover on with the extending hook straps to the front, mating them to the loop fastener in back as shown.