

2004-2012 Colorado Crew Rear Installation



Step 1.
Temporarily remove the plastic drink holders by pushing up on the lever (shown under the thumb), and sliding it forward. Set it aside for later re-installation.



Step 2.
Slide the seat belts out of their elastic restraints one at a time. Temporarily release the female end of the center shoulder belt by pushing in the orange release seen in step 12 (under pointer finger).



Step 3. Driver and Passenger Top/DT&PT:
All the parts of the seat cover are labeled on the inside right side of the front edge. Use the seat cover part ID chart to help identify the parts. Fold the seat ahead and slide the covers on with the hole for the latch in back, and turn the Hook Velcro™ up so it doesn't snag up while you're pulling it down into position.



Step 4. Driver and Passenger Top/DT&PT:
Pull the cover partway down, then form the top of the seat cover to the integral headrest. Line up the seams of the seat cover to the seams of the seat, they should match closely. With the top of the seat cover snugly fit, pull the seat cover the remaining way down, again, line up the seams along the left and right sides of the cover.



Step 5. Driver and Passenger Top/DT&PT:
Feel inside the opening on the seat cover for the release strap and pull it through.



Step 6. Driver and Passenger Top/DT&PT:
Pull down the left and right side of the covers and tuck the cover behind the plastic on the outside edge.



Step 7. Driver and Passenger Top/DT&PT:
Tuck the Hook Velcro™ into the seat and fold the seat down



Step 8. Driver and Passenger Top/DT&PT:
Pull the Hook Velcro™ tight and press it to the carpet on the back edge of the seat.



Step 9. Driver and Passenger Top/DT&PT:
Be sure to line up the opening for the latch.



Step 10. Driver and Passenger Top/DT&PT:
Starting on the inside edge, press the Hook Velcro™ onto the carpet on the seat. Then, flip the seat up and see if the cover needs to be adjusted or Velcro™ tightened for best fit.



Step 11. Bottom/B:

Place the cover on with the long Hook Velcro™ to the front.



Step 12. Bottom/B:

Slide the seat belts through the heavy duty elastic on the seat cover.



Step 13. Bottom/B:

Again, align the seams of the seat cover to the seams of the seat, they should closely match. Make sure to align it side to side first, then pull it back into position. Press the Hook Velcro™ to the fuzzy carpet on the front of the seat behind the drink holders.



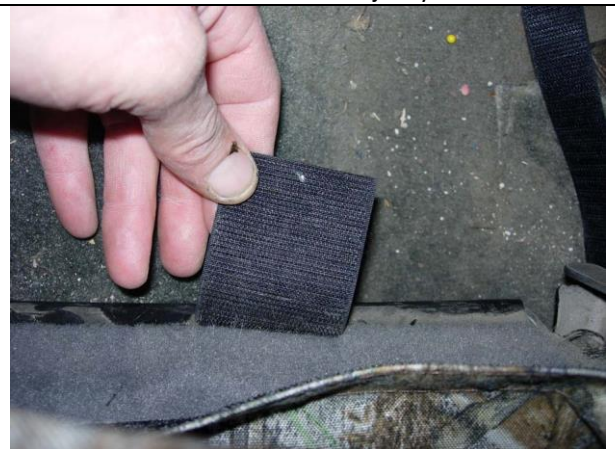
Step 14. Bottom/B:

Tuck in the back edge of the seat cover. Fold the backrests ahead and pull on it from behind. Pulling it through will be difficult, especially under the seat belts, but don't worry, it'll go. Don't stick the Hook Velcro™ on the back of the cover just yet.



Step 15. Bottom/B:

Route the long Hook Velcro™ under the front of the seat.



Step 16. Bottom/B:

Top view behind the driver's side. Reach under the back of the seat and pull the Hook Velcro™ tight, and press it to the carpet on the seat as shown.



Step 17. Bottom/B:

Tuck the fabric of the seat cover behind the plastic.



Step 18. Bottom/B:

Top view looking down behind the driver side. Route the side Hook Velcro™ at an angle and press it to the carpet on the back of the seat bottom.



Step 19. Bottom/B:

Lastly, pull the back edge down and press the Hook Velcro™ to the carpet on the back edge of the seat. Some repositioning and adjusting may be necessary to achieve the best fit. Slide the drink holders back into place.



Congratulations, you're done!

The seat covers will stay in place and give you several years of use, no matter how hard you use them.