

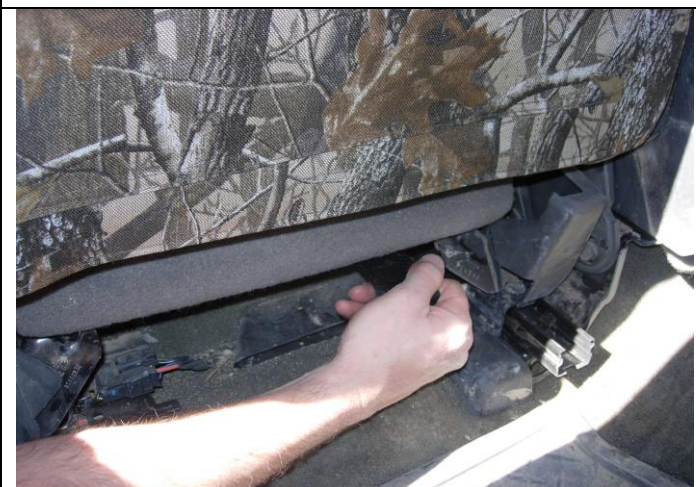
2003-2007 Tahoe 40/20/40 Opening Console



Step 1. Driver and Passenger Bottoms/DB & PB:
The pieces of the seat cover are labeled inside the seat cover. Use the "Seat Cover Piece Identification Chart" to identify the different pieces of the seat cover. Place the seat cover bottoms on with the long hook (sticky) Velcro™ to the front.



Step 2. Driver and Passenger Bottoms:
Work the material from the seam inside the seat cover from the inside to the outside edge (thumbs to fingers). Try to match the seams of the seat cover to the seams of your seat, they should closely match. **Electric seat controls:** Tuck the cutout made in the seat cover behind the backside of the plastic panel, then pull it over the front.



Step 3. Driver and Passenger Bottoms:
Use caution when reaching under the seat and avoid sharp metal edges. Move the seat back and forth, and tip the backrest forward for easy access to install the seat cover. Electric controls: Lift the seat up before routing the Velcro™. With the seat cover pulled back into position, route the long hook Velcro™ under the front of the seat, avoiding any seat mechanisms, connecting them to the carpet on the back edge of the seat as shown.



Step 4. Driver and Passenger Bottoms:
Route the outside edge hook Velcro™ where shown (above the recline lever) by sliding the hook Velcro™ up between the plastic and the seat. The Velcro™ will be under the seat in a one inch gap between the seat slide and the main frame of the seat. Feel for the strap under the seat and pull it back and connect it to the carpet on the back edge at an angle.



Step 5. Driver and Passenger Bottoms:
Route the inside edge hook Velcro™ to the back edge at an angle and connect it to the carpet on the seat.



Step 6. Driver and Passenger Bottoms:
Lastly, pull the back edge of the seat cover down and mate the hook Velcro™ sewn inside the seat cover to the carpet on the back edge of the seat.



Step 7. Driver and Passenger Bottoms:
View of under the front of the driver's seat. Push the plastic hook into the oblong hole, pull it tight, and mate the Velcro™. If no hole exists, use step 8.



Step 8. Driver and Passenger Bottoms:
View of under the front of the driver's seat. Push the plastic hook over the seat brace as shown, pull it tight, connect the Velcro™ and trim off the excess with a scissor.



Step 9. Driver and Passenger Tops/DT & PT:
Temporarily remove the headrests by lifting them up all the way. Insert a heavy paper clip into the holes in the plastic while holding gentle upward pressure until the headrest releases.



Step 10. Driver and Passenger Tops:
Carefully open the seat cover top side vertical Velcro™. Place the seat cover on with the long hook Velcro™ to the front. Lean into the vehicle and pull the inside edge all the way down. Tuck the fabric under the plastic for the headrests.



Step 11. Driver and Passenger Tops:
Use both hands in a sawing motion to slide the cover behind the plastic for the shoulder mounted seat belt.



Step 12. Driver and Passenger Tops:
Carefully use a feeler gauge or thin flat screw driver to finish tucking the seat cover behind the plastic on the top side of the seat belt plastic.



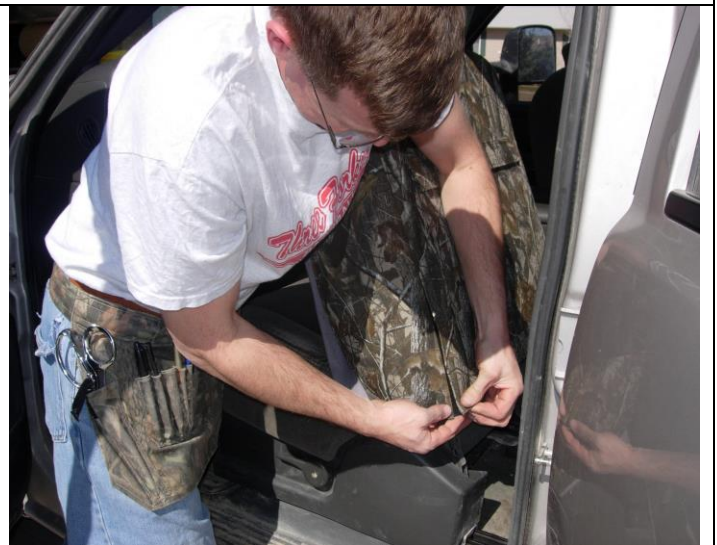
Step 13. Driver and Passenger Tops:
First, connect the horizontal Velcro™ on the side of the seat.



Step 14. Driver and Passenger Tops:
Next, start at the top, line up the seams, and connect the Velcro™.



Step 15. Driver and Passenger Tops:
Working from the top, fasten the Velcro™ a few inches at a time, using what I call a "bear hug" method" with some downward pressure.



Step 16. Driver and Passenger Tops:
Keep re-fastening the outside edge Velcro™ until the seams meet and the seat cover lines up at the bottom.



Step 17. Driver and Passenger Tops:

Lastly, tuck the hook Velcro™ into the seat, connect them to the loop (fuzzy) Velcro™ sewn inside the back edge, starting on one side working to the other.

Be careful to not over tighten the Velcro™, as they can permanently dent the foam of your seat.



Step 18. Middle Bottom/MB:

Slide the passenger and driver seats all the way forward. Working from behind the console area, lean over and tuck the front of the middle bottom seat cover behind the plastic drink holders as shown. Route the long hook Velcro™ in front under the and connect them to the carpet on the back of the seat.



Step 19. Middle Bottom:

Tuck the sides of the seat cover in behind the plastic of the console hinge as shown.



Step 20. Middle Bottom:

Poke the 1"X4" loop strap down in between the seat and the plastic just in front of the 1" round pipe that runs side to side in back.



Step 21. Middle Bottom:

Mate the left and right short loop fasteners to the hook fastener sewn inside the back edge. Pull the back edge down and mate the hook fastener to the carpet on the seat.



Step 22. Lid/L:

Put the cover for the lid on with the console in the down position. Fold it up and mate the fasteners on the under side of the lid as shown.



Step 23. Console/C:

With the console in the up position, place the cover on. Hold it on with one hand and fold the console down. Tuck the seat cover around the plastic covering the hinge points on the side and through to the back. Mate the hook fastener sewn inside the back edge to carpet (if it has any) located below the hinge. If no carpet exists, slide the two ½"X4" loop fasteners into the sides of the hinge using a sawing motion.

Note the ¼" to ½" gap between the console cover and the lid. This is necessary to provide a clearance gap so the lid stays up when it is opened.



Step 24. Console:

Pull the cover up into position. There will be a small amount of the original fabric showing on the sides. This is important that the seat cover material does not come between the console and the lid to ensure proper closing of the lid. Note the areas where the fasteners will lay inside of the console. Very important: Clean these areas with rubbing alcohol, wiping them dry while the alcohol is still wet. If they are not sticking, stop and re-clean the areas. Do not use any auto detailing protectant before applying the adhesive hook, it will not adhere. If it has been used, clean the areas with grease fighting dish detergent to clean off the protectant then clean the areas with alcohol.



Step 25. Console:

Place the 1" square adhesive backed hook tab at the end of the strap and peel off the backing.



Step 26. Console:

Fold the fasteners inside the console and push very hard on the adhesive part to ensure adhesion. Note the location of the adhesive hook; it's on the inside of the plastic box. Don't put the adhesive hook on the top lip of the plastic box or else the lid won't close properly.



Congratulations, you're done!

A properly installed seat cover will stay in place and give you several years of protection.



The seat covers pictured are in **Realtree™ Hardwoods HD**