

2002-07 F-250-350 Bucket Seat Installation



Step 1. Lid/L:

All the pieces of the seat cover are marked inside. Refer to the "Seat Cover Part Identification Chart" to identify pieces. Place the lid cover on with the letter "L" marked inside to the back (hinge). Tuck the cover behind the notebook clip in front and loosely mate the side to side Velcro™. Slide the two rear fasteners into the hinge area and mate them to the corresponding Velcro™ in front. Reposition and tighten the Velcro™ for a snug fit.

Step 2. Driver & Passenger Bottoms/DB&PB:

Place the seat cover on with the long hook Velcro™ to the front. Work the material from the seam inside the seat cover from inside (forefinger) to out (thumb). It takes a little doing, but this will produce a wrinkle free seam once the seat cover is tightened and in place.



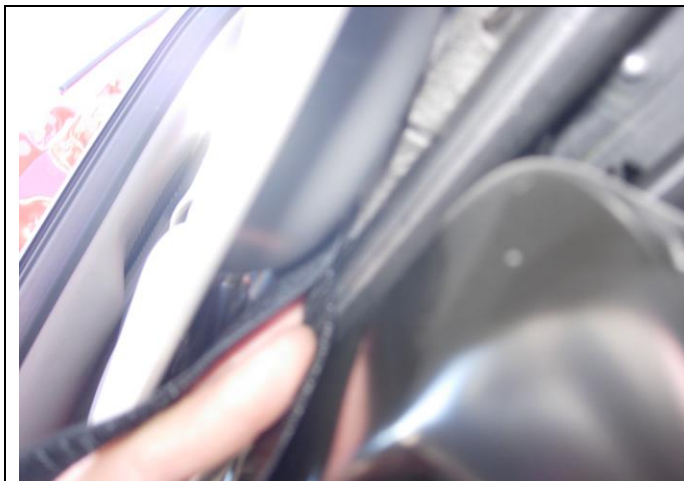
Step 3. Driver & Passenger Bottoms/DB&PB:

Optional but helpful: Temporarily removing the Phillips screw in the plastic cowling below the recline lever (shown) will make the routing of the outside edge hook strap between the seat and the plastic easier. Put the screw back in after completing step 4.



Step 4. Driver & Passenger Bottoms/DB&PB:

For vehicles with electric controls: Use the controls to lift the seat up all the way, giving yourself more clearance. Slide the long outside edge hook Velcro™ between the seat and plastic cowling, mating it at an angle to the carpet on the back edge of the seat.



Step 5. Driver & Passenger Bottoms/DB&PB:

View from under the passenger bottom on the outside looking up.

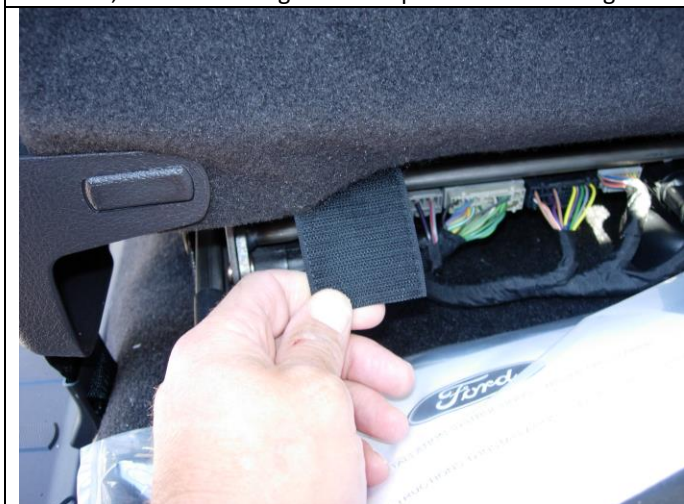
Vehicles with manual seat controls: move the seat back and forth to locate the seat slide. The Velcro™ needs to route between the seat slide and the seat so the seat can move freely back and forth. Do this by sliding your fingers behind the plastic as shown pushing the Velcro™ up until you get above the seat slide. Then, push the Velcro™ in above the seat slide between the seat fabric and the slide. Push in a little at a time until you can feel the Velcro™ from underneath the seat. Route the Velcro™ at an angle, avoiding any seat mechanisms and connect it to the carpet on the back edge of the seat. If this is proving to be too difficult, the Velcro™ can be routed straight back, paralleling the slide, and connecting to the carpet on the back edge.



Step 6. Driver & Passenger Bottoms/DB&PB:

View from behind the passenger side. Pull back hard on the inside edge part of the seat cover (shown) and route it around to the back, connecting it to the carpet on the back edge of the seat.

Then, tuck the rear most outside edge hook Velcro™ (not shown) into the seat, around the back corner of the seat, mating it at an angle to the carpet on the back edge of the seat.



Step 7. Driver & Passenger Bottoms/DB&PB:

Route the long front hook fasteners under the front of the seat, avoiding seat mechanisms, and mate them to the carpet on the back edge of the seat bottom.



Step 8. Driver & Passenger Bottoms/DB&PB:

Lastly, pull back hard on the rear part of the seat cover, center it, and connect it to the carpet on the back edge of the seat by pressing it hard into the carpet on the seat bottom.



Step 9. Driver & Passenger Top/DT&PT:

Carefully open the seat cover and slide it on with the extending hook Velcro™ to the front and the cut-out for the armrest to the inside. Move the armrest up and down while tucking the fabric behind it.



Step 10. Driver & Passenger Top/DT&PT:

Mate the Velcro™ directly behind the armrest.



Step 11. Driver & Passenger Top/DT&PT:

Next, mate the vertical Velcro™ starting at the top, working your way down a few inches at a time.



Step 12. Driver & Passenger Top/DT&PT:

Mate the front Velcro™ by gently pulling on them from behind with one hand while using the other hand in a smoothing action down the front. Follow the Velcro™ with the front hand(shown), connecting them in back as shown.



Step 13. Armrests/DA&PA:

Open the armrests in back and slide them all the way on, lining up the seams of the cover to the seams of the armrest.



Step 14. Armrests/DA&PA:

Mate the Velcro™ in back. The armrests fit snug so it will be take a few gathering attempts to close the gap like this.