

2001-04 Toyota Tacoma SR5 Bucket Seat Installation



Step 1. Driver and Passenger Tops/DT & PT:

Temporarily remove the headrests from the seat by lifting them up all the way, holding gentle upward pressure and depress the push button release until the headrest comes out of the seat. The pieces of the seat cover are labeled inside.

Use the "Seat Cover Identification Chart" to identify the pieces of the seat cover.

For video instructions, visit this link:

<https://youtu.be/cs2-Gw7IKYE>



Step 2. Driver and Passenger Tops:

Slide the seat cover top on with the long extending hook (sticky) Velcro™ to the front. The seat cover will be tight when you get it about half way down, but keep working both sides a little at a time. The seats foam will relax when the seat cover is pulled all the way down.



Step 3. Driver and Passenger Tops:

Tuck the seat cover under the plastic for the headrests starting with the push button release side first. Next, line up the seams of the seat cover with the seams of the seat, they should closely match. Tuck the extending hook Velcro™ into the seat and connect them to the loop Velcro™ sewn inside the back edge.



Step 4. Driver and Passenger Bottoms/DB & PB:

Place the seat cover on with the long hook Velcro™ to the front. Tuck in the back edge of the seat cover and line up the seams of the seat cover with the seams of the seat. Route the long hook Velcro™ under the front of the seat and connect them to the loop Velcro™ sewn on the back edge.



Step 5. Driver and Passenger Bottoms:

Route the outside edge hook Velcro™ between the plastic and the seat, making sure to not interfere with the seat slide. Route them at an angle to the back and connect them to the loop Velcro™ in back. Route the inside edge Velcro™ similarly, avoiding the seat slide and connect it to the loop Velcro™ in back.



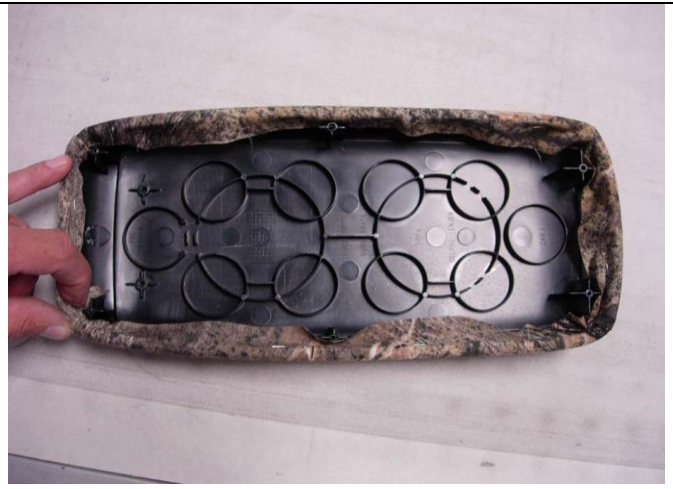
Step 6. Driver and Passenger Bottoms:

Fasten two plastic snap hooks under the back of each seat to a support wire (side to side supporting the foam), then connect them to the loop Velcro™ on the back edge. Trim off the excess length of the Velcro™.



Step 7. Headrests/H:

Slide the headrest covers on with the extending hook Velcro™ to the front. Connect them to the loop Velcro™ sewn inside the back edge as shown.



Step 8. Lid/L:

Remove the screws from the underside of the console lid. Place the cover on the lid with the letter "L" to the back. Center the cover, then staple cover to the underside on the edges. Make sure the staples are no longer than 1/4". Start on the front, next the back, then lastly the sides. Re-install the lid back onto the console.