

## 1998-2002 Dodge Quad Leather Rear Bench Installation



### Step 1.

Removing the seat can make the installation easier, but is not necessary. Flip the seat bottom up, then remove the levers.



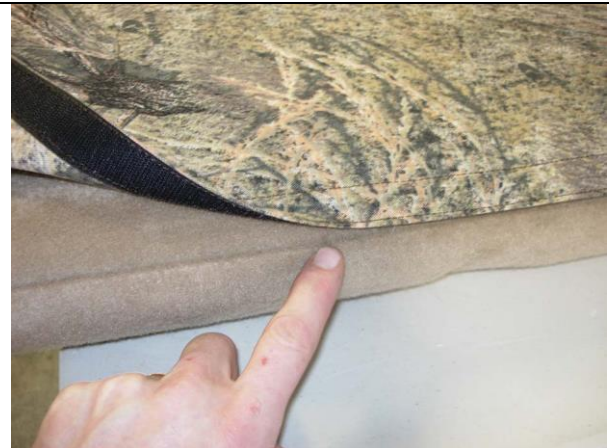
### Step 2. Bottom/B:

The seat cover bottom has the letter "B" printed on the fabric on the inside right corner. Turn the Velcro™ inside out to keep it from catching. Slide the cover on with the two holes for the levers to the bottom side, then align the holes.



### Step 3. Bottom/B:

Put the handles back on. Line up the seams of the seat cover to the seams of the seat, they should closely match.



### Step 4. Bottom/B:

With the seat bottom up, pull the cover down and press the Velcro™ onto the carpet as shown, starting on one side moving to the other.



### Step 5. Bottom/B:

Pull the material from the topside and press it to the



### Step 6. Top/T:

Turn the Velcro™ inside out to keep it from catching,

carpet as shown.

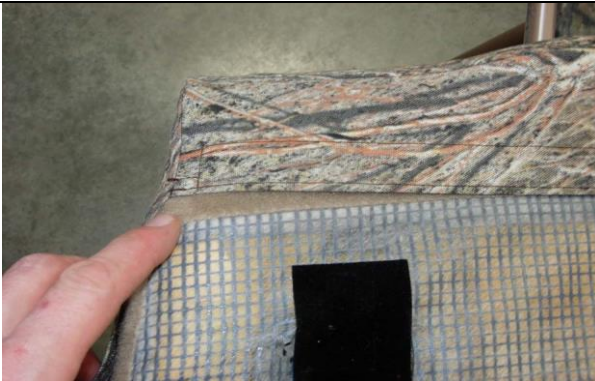


**Step 7. Top/T:**  
Press one side to the carpet.

then form the seat cover to the top corners.



**Step 8. Top/T:**  
Stick the middle to the carpet.



**Step 9. Top/T:**  
Press the other side onto the carpet.



**Step 10. Top/T:**  
Pull down on the sides of the cover and press the Velcro™ onto the carpet halfway down the side.



**Step 11. Top/T:**  
Form the cover around the bottom corners, then connect the long side Velcro™ as shown to the carpet on the side of the seat.



**Step 12. Top/T:**  
Lastly, press the remaining side Velcro™ to the carpet on the side of the seat.